



Consultix Safari™ . High Power CW Kit

Portable meets Powerful



The Safari™ CW transmitter is a portable high-power signal generator engineered particularly for field applications such as outdoor model tuning, candidate site assessment, DAS injection/testing or CW walk-testing.

The RF generator allows full flexibility of user's choice from single, dual or quad port operation with the widest mix of amplifiers in the market from 4 Watts up to 80 Watts covering most of wireless bands from 100 MHz up to 4.2 GHz.

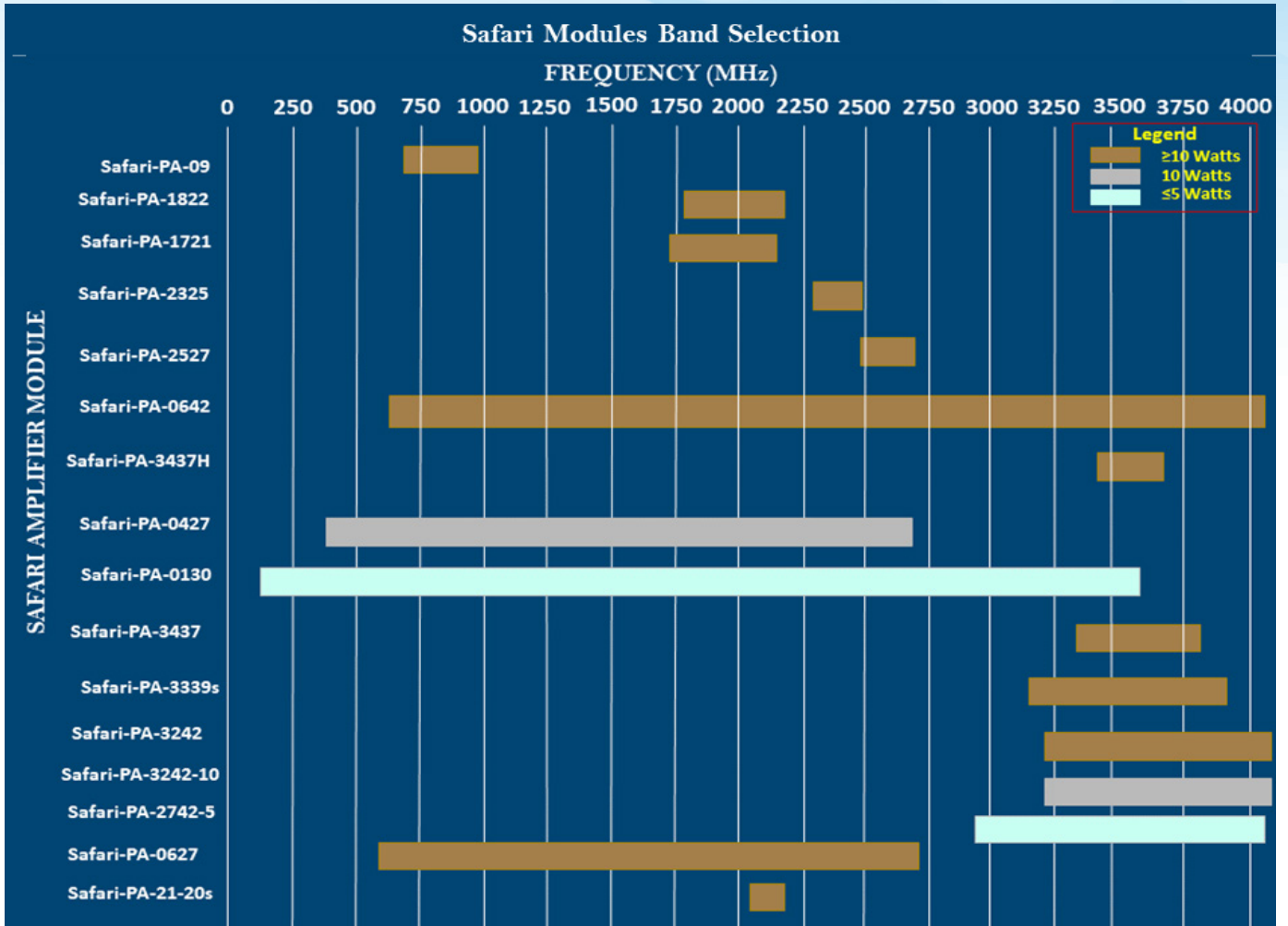
The system is based on Consultix award-winning WTX transmitter which achieved remarkable success globally and has been the preferable choice for hundreds of customers since 2011 due to its field-convenience, wide-band operation and cost-efficiency.





| General Information | |
|--------------------------|---|
| Frequency Bands | Selection of up to 4 bands of: 200, 300, 400, 700, 850, 900, 1800, 1900, 2100, 2400, 2600, 3500, 3700 MHz or Wideband Modules |
| Frequency Resolution | 100 KHz (1 KHz Optional for Safari-Base1 Models) |
| Frequency Accuracy | 2 ppm. (typ. 1 ppm) |
| Frequency Aging per Year | 1 ppm |
| Modulation Type | CW (Continuous Wave) |
| Amplitude Accuracy | ± 1 dB (Typ. ± 0.5 dB) * |
| Stability | ± 0.5 dB + 0.1 dB/ °C |
| Amplitude Resolution | 1 dB or 1 W (Select with Order) |
| Phase Noise | < -65 dBc/Hz @ 10 KHz offset |
| Spurious | -45 dBc to -60 dBc (@100 KHz from carrier) |
| RF Output port | N-female |
| RF Port(s) Impedance | 50 Ω |
| External DC input | 28 VDC |
| Power Supply | Included external AC/DC Adapter: 100-240V AC, 50-60 Hz |
| Enclosure | Ruggedized Plastic Hard Case |
| DC Input Connector | Circular 4 pins |
| Operating Temperature | -10 to +50 C |
| Ingress Protection | IP65 (Lid Closed) |
| Cooling | Forced Air |
| Display | LCD |
| Control | Transmitter Keypad |
| Indoor Mode | Software License -10 to 15 dBm (20 dBm Optional for Safari-Base1 Models) |
| Certifications | FCC and EN55022/CISPR 22 EMI |
| Standard Package | Transmitter, AC/DC adapter, user manual and calibration certificate |

* This parameter is specified @ temperature 25 - 30 C° and after a 30 minute warm-up time, hence validation power meter is typically recommended particularly in case of significant temperature changes



Configuration Guide

| Base selection | Safari-Base1 | Safari-Base1L | Safari-Base2 | Safari-Base2L | Safari-Base3 | Safari-Base4 |
|-----------------------------|--------------------|--------------------|--------------------|---------------|--------------|--------------|
| No of amplifiers/output | 1 | | 2 | | 3 | 4 |
| Power Consumption | 20 W | 25 W | 30 W | | 33 W | 36 W |
| External Dimensions | 420 x 340 x 180 mm | 450 x 430 x 260 mm | 530 x 430 x 230 mm | | | |
| Weight (without amplifiers) | 6 Kg | 10 Kg | 11.5 Kg | 14 Kg | 12.5 Kg | 13.5 Kg |

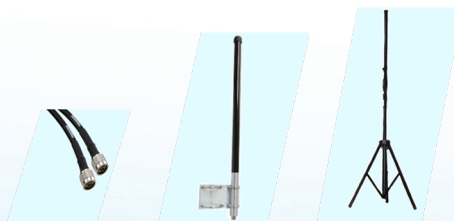
| Amplifier Modules | Frequency Range | Maximum Output Power * | Minimum Output Power | VSWR Protection | Power Consumption | Weight |
|-------------------|------------------|------------------------|----------------------|-----------------|-------------------|--------|
| Safari-PA-09 | 690 to 980 MHz | 20 Watts | 5 Watts | 10:1 | 98 W | 350 gm |
| Safari-PA-1822 | 1800 to 2200 MHz | 20 Watts | 5 Watts | 10:1 | 126 W | 500 gm |
| Safari-PA-1721 | 1700 to 2100 MHz | 20 Watts | 5 Watts | 10:1 | 126 W | 500 gm |
| Safari-PA-2325 | 2300 to 2500 MHz | 20 Watts | 5 Watts | 10:1 | 78.4 W | 500 gm |
| Safari-PA-2527 | 2500 to 2700 MHz | 20 Watts | 5 Watts | 10:1 | 126 W | 500 gm |
| Safari-PA-0642 | 600 to 4200 MHz | 20 Watts | 5 Watts | 10:1 | 130 W | 900 gm |
| Safari-PA-3437H | 3400 to 3700 MHz | 30 Watts | 5 Watts | 10:1 | 200 W | 900 gm |
| Safari-PA-0427 | 400 to 2700 MHz | 10 Watts | 37 dBm | 10:1 | 110 W | 600 gm |
| Safari-PA-0130 | 150 to 3600 MHz | 5 Watts | 1 Watt | 10:1 | 120 W | 900 gm |
| Safari-PA-3437 | 3300 to 3800 MHz | 20 Watts | 1 Watt | 10:1 | 120 W | 900 gm |
| Safari-PA-3339s | 3200 to 3900 MHz | 80 Watts | 1 Watt | 10:1 | 70 W | 300 gm |
| Safari-PA-3242 | 3200 to 4200 MHz | 20 Watts | 5 Watts | 10:1 | 100 W | 500 gm |
| Safari-PA-3242-10 | 3200 to 4200 MHz | 10 Watts | 1 Watt | 10:1 | 100 W | 500 gm |
| Safari-PA-2742-5 | 2700 to 4200 MHz | 5 Watts | 1 Watts | 10:1 | 70 W | 300 gm |
| Safari-PA-0627 | 600 to 2700 MHz | 20 Watts | 5 Watts | 10:1 | 100 W | 500 gm |
| Safari-PA-21-20s | 2110 to 2170 MHz | 48 dBm (49 dBm)* | 5 Watts | 10:1 | 550 W | 900 gm |

* Refer to Ordering Information Table for Exact Power vs. Frequency



| Ordering Information | |
|---|-------------------|
| Portable heavy-duty enclosure for integrated outdoor CW system accommodating transmitter and up to 1 Amplifier | Safari-Base1 |
| Portable heavy-duty enclosure for integrated outdoor CW system accommodating transmitter and up to 1 Amplifier | Safari-Base1L |
| Portable heavy-duty enclosure for integrated outdoor CW system accommodating transmitter and up to 2 Amplifiers | Safari-Base2 |
| Portable heavy-duty enclosure for integrated outdoor CW system accommodating transmitter and up to 2 Amplifiers | Safari-Base2L |
| Portable heavy-duty enclosure for integrated outdoor CW system accommodating transmitter and up to 3 Amplifiers | Safari-Base3 |
| Portable heavy-duty enclosure for integrated outdoor CW system accommodating transmitter and up to 4 Amplifiers | Safari-Base4 |
| Safari Module: Wide-band amplifier; 690 - 980 MHz, 20 Watt CW | Safari-PA-09 |
| Safari Module: Wide-band amplifier; 1800 - 2200MHz, 20 Watt CW | Safari-PA-1822 |
| Safari Module: Wide-band amplifier; 1700 - 2100MHz, 20 Watt CW | Safari-PA-1721 |
| Safari Module: Power amplifier; 2300 - 2500 MHz, 20 Watt CW | Safari-PA-2325 |
| Safari Module: Power amplifier; 2500 - 2700 MHz, 20 Watt CW | Safari-PA-2527 |
| Safari Module: Power amplifier; 3400 to 3700 MHz, max. power 30 Watts (45 dBm). | Safari-PA-3437H |
| Safari Module: Wide-band amplifier; 600 to 4200 MHz, max. 20 Watts CW: 43 dBm (20 Watts) : 600 to 2700 MHz 43 dBm (20 Watts) : 3300 to 3500 MHz 41.5 dBm (14 Watts) : 3500 to 4000 MHz 40 dBm (10 Watts) : 4000 to 4200 MHz | Safari-PA-0642 |
| Safari Module: Wide-band amplifier; 400 - 2700MHz, 10 Watt CW | Safari-PA-0427 |
| Safari Module: Wide-band amplifier; 150 - 3600 MHz; 37 dBm; 150 - 2700 MHz 33 dBm; 2700 - 3500 MHz 31 dBm; 3500 - 3600 MHz | Safari-PA-0130 |
| Safari Module: Wide-band amplifier; 3200-4200 MHz, 20 Watts CW. | Safari-PA-3242 |
| Safari Module: Wide-band amplifier; 3200-4200 MHz, 10 Watts CW. | Safari-PA-3242-10 |
| Safari Module: Wide-band amplifier; 2700-4200 MHz, 5 Watts CW. | Safari-PA-2742-5 |
| Safari Module: Wide-band amplifier; 600-2700 MHz, 20 Watts CW. | Safari-PA-0627 |
| Safari Module: Power amplifier; 3300-3900 MHz , Max. 80 Watts; 80 Watts: 3200 - 3850 MHz 50 Watts: 3850 - 3900 MHz | Safari-PA-3339s |
| Safari module: Power amplifier, 3300 - 3800 MHz; 20 Watts; 3300 - 3600 MHz 10 Watts; 3600 - 3800 MHz | Safari-PA-3437 |
| Safari Module: Power amplifier; 2110-2170 MHz, output power 48 dBm (over-range up to 49 dBm). | Safari-PA-21-80s |

| Optional Accessories | |
|---|-------------------|
| RF cable; 6m, 400 - 5800 MHz, overall Loss 1.5 dB @2.4GHz, Type-N male to Type-N male | Safari-Acc-CNN-6 |
| RF cable; 18m, 400 - 5800 MHz, overall Loss 4.2 dB @2.4GHz, Type-N male to Type-N male | Safari-Acc-CNN-18 |
| Omni-directional antenna; 698 -960 MHz & 1710- 2180 MHz & 2200 - 2700 MHz, 100 Watt, Gain >1.2 dBi, VSWR < 1.8:1 | Safari-Acc-OHA727 |
| Outdoor Omni-directional antenna; 900 MHz Band, 25 Watt, Gain 4 dBi, VSWR 2:1, Type N-female | Safari-Acc-OA9 |
| Outdoor Omni-directional antenna; 1800 MHz Band, 25 Watt, Gain 5 dBi, VSWR 2:1, Type N-female | Safari-Acc-OA18 |
| Outdoor Omni-directional antenna; 1710 - 2170 MHz, 25 Watt, Gain 6 dBi, VSWR < 2:1, Type N-female | Safari-Acc-OA21 |
| Outdoor Omni-directional antenna; 2500 - 2700 MHz, 25 Watt, Gain 6 dBi, VSWR 2:1, Type N-female | Safari-Acc-OA26 |
| Outdoor Omni-directional antenna; 3400 - 3700 MHz, 25 Watt, Gain 9 dBi, VSWR 2:1, Type N-female | Safari-Acc-OA35-9 |
| Non-metal Tripod; 3.2 m (125 in.), Folds down to 2.0 m (78 in.), 1.1m Collapsed, < 7 Kg. Including antenna mounting plate | WTX-Acc-3LT |



Find us:

133, St. 17, Mohammed Farid Axis, 11835 New Cairo, Egypt.
+2 02 25604930 sales@consultixwireless.com