



Consultix Safari™ . High Power CW Kit

Portable meets Powerful



The Safari™ CW transmitter is a portable high-power signal generator engineered particularly for field applications such as outdoor model tuning, candidate site assessment, DAS injection/testing or CW walk-testing.

The RF generator allows full flexibility of user's choice from single, dual or quad port operation with the widest mix of amplifiers in the market from 4 Watts up to 80 Watts covering most of wireless bands from 100 MHz up to 4.2 GHz.

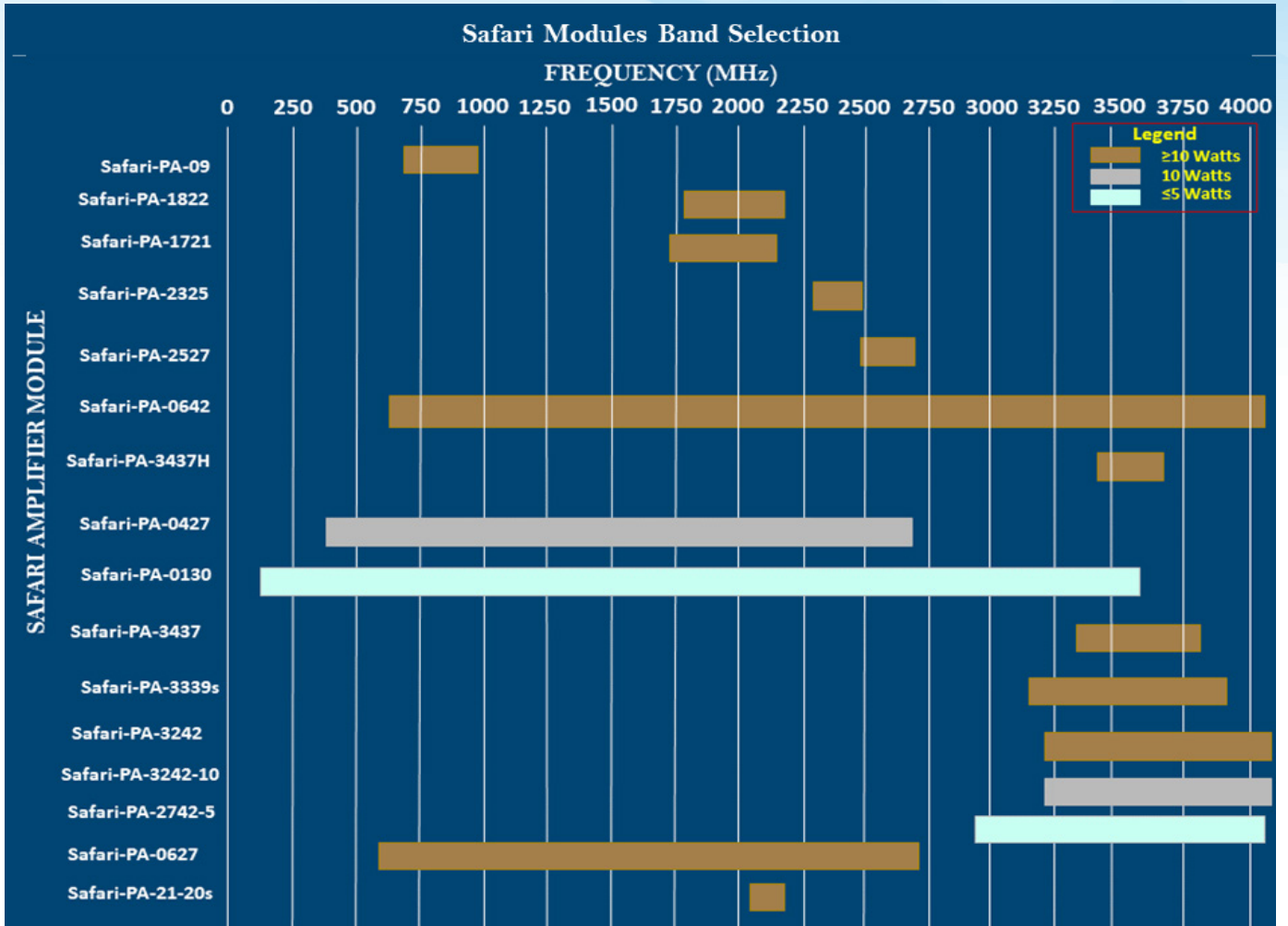
The system is based on Consultix award-winning WTX transmitter which achieved remarkable success globally and has been the preferable choice for hundreds of customers since 2011 due to its field-convenience, wide-band operation and cost-efficiency.





General Information	
Frequency Bands	Selection of up to 4 bands of: 200, 300, 400, 700, 850, 900, 1800,1900, 2100, 2400, 2600, 3500, 3700 MHz or Wideband Modules
Frequency Resolution	100 KHz (1 KHz Optional for Safari-Base1 Models)
Frequency Accuracy	2 ppm. (typ. 1 ppm)
Frequency Aging per Year	1 ppm
Modulation Type	CW (Continuous Wave)
Amplitude Accuracy	± 1 dB (Typ. ±0.5dB) *
Stability	±0.5 dB + 0.1 dB/ °C
Amplitude Resolution	1 dB or 1 W (Select with Order)
Phase Noise	< -65 dBc/Hz @ 10 KHz offset
Spurious	-45 dBc to -60 dBc (@100 KHz from carrier)
RF Output port	N-female
RF Port(s) Impedance	50 Ω
External DC input	28 VDC
Power Supply	Included external AC/DC Adapter: 100-240V AC, 50-60 Hz
Enclosure	Ruggedized Plastic Hard Case
DC Input Connector	Circular 4 pins
Operating Temperature	-10 to +50 C
Ingress Protection	IP65 (Lid Closed)
Cooling	Forced Air
Display	LCD
Control	Transmitter Keypad
Indoor Mode	Software License -10 to 15 dBm (20 dBm Optional for Safari-Base1 Models)
Certifications	FCC and EN55022/CISPR 22 EMI
Standard Package	Transmitter, AC/DC adapter, user manual and calibration certificate

* This parameter is specified @ temperature 25 - 30 C° and after a 30 minute warm-up time, hence validation power meter is typically recommended particularly in case of significant temperature changes



Configuration Guide

Base selection	Safari-Base1	Safari-Base1L	Safari-Base2	Safari-Base2L	Safari-Base3	Safari-Base4
No of amplifiers/output	1		2		3	4
Power Consumption	20 W	25 W	30 W		33 W	36 W
External Dimensions	420 x 340 x 180 mm	450 x 430 x 260 mm	530 x 430 x 230 mm			
Weight (without amplifiers)	6 Kg	10 Kg	11.5 Kg	14 Kg	12.5 Kg	13.5 Kg

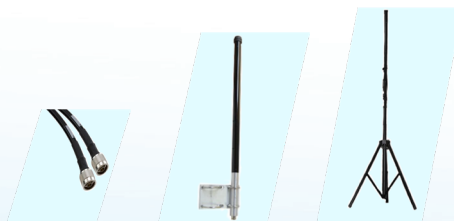
Amplifier Modules	Frequency Range	Maximum Output Power *	Minimum Output Power	VSWR Protection	Power Consumption	Weight
Safari-PA-09	690 to 980 MHz	20 Watts	5 Watts	10:1	98 W	350 gm
Safari-PA-1822	1800 to 2200 MHz	20 Watts	5 Watts	10:1	126 W	500 gm
Safari-PA-1721	1700 to 2100 MHz	20 Watts	5 Watts	10:1	126 W	500 gm
Safari-PA-2325	2300 to 2500 MHz	20 Watts	5 Watts	10:1	78.4 W	500 gm
Safari-PA-2527	2500 to 2700 MHz	20 Watts	5 Watts	10:1	126 W	500 gm
Safari-PA-0642	600 to 4200 MHz	20 Watts	5 Watts	10:1	130 W	900 gm
Safari-PA-3437H	3400 to 3700 MHz	30 Watts	5 Watts	10:1	200 W	900 gm
Safari-PA-0427	400 to 2700 MHz	10 Watts	37 dBm	10:1	110 W	600 gm
Safari-PA-0130	150 to 3600 MHz	5 Watts	1 Watt	10:1	120 W	900 gm
Safari-PA-3437	3300 to 3800 MHz	20 Watts	1 Watt	10:1	120 W	900 gm
Safari-PA-3339s	3200 to 3900 MHz	80 Watts	1 Watt	10:1	70 W	300 gm
Safari-PA-3242	3200 to 4200 MHz	20 Watts	5 Watts	10:1	100 W	500 gm
Safari-PA-3242-10	3200 to 4200 MHz	10 Watts	1 Watt	10:1	100 W	500 gm
Safari-PA-2742-5	2700 to 4200 MHz	5 Watts	1 Watts	10:1	70 W	300 gm
Safari-PA-0627	600 to 2700 MHz	20 Watts	5 Watts	10:1	100 W	500 gm
Safari-PA-21-20s	2110 to 2170 MHz	48 dBm (49 dBm)*	5 Watts	10:1	550 W	900 gm

* Refer to Ordering Information Table for Exact Power vs. Frequency



Ordering Information	
Portable heavy-duty enclosure for integrated outdoor CW system accommodating transmitter and up to 1 Amplifier	Safari-Base1
Portable heavy-duty enclosure for integrated outdoor CW system accommodating transmitter and up to 1 Amplifier	Safari-Base1L
Portable heavy-duty enclosure for integrated outdoor CW system accommodating transmitter and up to 2 Amplifiers	Safari-Base2
Portable heavy-duty enclosure for integrated outdoor CW system accommodating transmitter and up to 2 Amplifiers	Safari-Base2L
Portable heavy-duty enclosure for integrated outdoor CW system accommodating transmitter and up to 3 Amplifiers	Safari-Base3
Portable heavy-duty enclosure for integrated outdoor CW system accommodating transmitter and up to 4 Amplifiers	Safari-Base4
Safari Module: Wide-band amplifier; 690 - 980 MHz, 20 Watt CW	Safari-PA-09
Safari Module: Wide-band amplifier; 1800 - 2200MHz, 20 Watt CW	Safari-PA-1822
Safari Module: Wide-band amplifier; 1700 - 2100MHz, 20 Watt CW	Safari-PA-1721
Safari Module: Power amplifier; 2300 - 2500 MHz, 20 Watt CW	Safari-PA-2325
Safari Module: Power amplifier; 2500 - 2700 MHz, 20 Watt CW	Safari-PA-2527
Safari Module: Power amplifier; 3400 to 3700 MHz, max. power 30 Watts (45 dBm).	Safari-PA-3437H
Safari Module: Wide-band amplifier; 600 to 4200 MHz, max. 20 Watts CW: 43 dBm (20 Watts) : 600 to 2700 MHz 43 dBm (20 Watts) : 3300 to 3500 MHz 41.5 dBm (14 Watts) : 3500 to 4000 MHz 40 dBm (10 Watts) : 4000 to 4200 MHz	Safari-PA-0642
Safari Module: Wide-band amplifier; 400 - 2700MHz, 10 Watt CW	Safari-PA-0427
Safari Module: Wide-band amplifier; 150 - 3600 MHz; 37 dBm; 150 - 2700 MHz 33 dBm; 2700 - 3500 MHz 31 dBm; 3500 - 3600 MHz	Safari-PA-0130
Safari Module: Wide-band amplifier; 3200-4200 MHz, 20 Watts CW.	Safari-PA-3242
Safari Module: Wide-band amplifier; 3200-4200 MHz, 10 Watts CW.	Safari-PA-3242-10
Safari Module: Wide-band amplifier; 2700-4200 MHz, 5 Watts CW.	Safari-PA-2742-5
Safari Module: Wide-band amplifier; 600-2700 MHz, 20 Watts CW. Optional (over-range down to 400 MHz).	Safari-PA-0627
Safari Module: Power amplifier; 3300-3900 MHz , Max. 80 Watts; 80 Watts: 3200 - 3850 MHz 50 Watts: 3850 - 3900 MHz	Safari-PA-3339s
Safari module: Power amplifier, 3300 - 3800 MHz; 20 Watts; 3300 - 3600 MHz 10 Watts; 3600 - 3800 MHz	Safari-PA-3437
Safari Module: Power amplifier; 2110-2170 MHz, output power 48 dBm (over-range up to 49 dBm).	Safari-PA-21-80s
Range extension for Safari module PA-0627 down to 400 MHz.	Safari-PA-0627L

Optional Accessories	
RF cable; 6m, 400 - 5800 MHz, overall Loss 1.5 dB @2.4GHz, Type-N male to Type-N male	Safari-Acc-CNN-6
RF cable; 18m, 400 - 5800 MHz, overall Loss 4.2 dB @2.4GHz, Type-N male to Type-N male	Safari-Acc-CNN-18
Omni-directional antenna; 698 -960 MHz & 1710- 2180 MHz & 2200 - 2700 MHz, 100 Watt, Gain >1.2 dBi, VSWR < 1.8:1	Safari-Acc-OHA727
Outdoor Omni-directional antenna; 900 MHz Band, 25 Watt, Gain 4 dBi, VSWR 2:1, Type N-female	Safari-Acc-OA9
Outdoor Omni-directional antenna; 1800 MHz Band, 25 Watt, Gain 5 dBi, VSWR 2:1, Type N-female	Safari-Acc-OA18
Outdoor Omni-directional antenna; 1710 - 2170 MHz, 25 Watt, Gain 6 dBi, VSWR < 2:1, Type N-female	Safari-Acc-OA21
Outdoor Omni-directional antenna; 2500 - 2700 MHz, 25 Watt, Gain 6 dBi, VSWR 2:1, Type N-female	Safari-Acc-OA26
Outdoor Omni-directional antenna; 3400 - 3700 MHz, 25 Watt, Gain 9 dBi, VSWR 2:1, Type N-female	Safari-Acc-OA35-9
Non-metal Tripod; 3.2 m (125 in.), Folds down to 2.0 m (78 in.), 1.1m Collapsed, < 7 Kg. Including antenna mounting plate	WTX-Acc-3LT



Find us:

133, St. 17, Mohammed Farid Axis, 11835 New Cairo, Egypt.
+2 02 25604930 sales@consultixwireless.com